

**CITY OF PORTSMOUTH, NEW HAMPSHIRE  
BICYCLE PEDESTRIAN BLUE RIBBON COMMITTEE**



**MEETING NOTICE  
WEDNESDAY, JUNE 10, 2026, 6 pm  
City Hall Conference Room A  
1 Junkins Avenue, Portsmouth NH 03801**

---

To register to participate via Zoom:

[https://us06web.zoom.us/webinar/register/WN\\_Pibt\\_-LUSnGiquM53VuDTw](https://us06web.zoom.us/webinar/register/WN_Pibt_-LUSnGiquM53VuDTw)

## **Bicycle & Pedestrian Advisory Committee New Member Orientation Brief**

*Based on the 2025 Bicycle and Pedestrian Master Plan Update*

---

### **Welcome to the Committee**

You've joined one of the most tangible, visible, and community-driven committees in Portsmouth. The work you do will shape how thousands of people - families, commuters, seniors, children - experience this city every single day.

This brief gives you the foundation to walk into your first meeting ready to contribute. It summarizes the City's adopted 2025 Bicycle and Pedestrian Master Plan: why it exists, what it calls for, what's already been accomplished, and where your committee's focus belongs over the next one to two years.

The full Plan (available [here](#)) is your reference document, it's detailed, data-rich, and thorough. This brief is your launchpad.

---

### **Our Vision & Why It Matters**

*"Portsmouth residents, workers, and visitors will view walking and bicycling as comfortable and convenient ways to get around the City. Walking and bicycling will be a part of Portsmouth's culture, making the City a healthy and vibrant place to live." - Portsmouth Bicycle and Pedestrian Master Plan Update, 2025*

This isn't just a transportation vision - it's a vision for a city where people can live car-free if they choose, where kids can safely bike to school, where seniors can walk to errands, and where every new street project builds toward that goal. The Plan is explicitly connected to Portsmouth's Climate Action Plan and its affordable housing priorities: when people can walk or bike to work, they spend less on transportation, improving quality of life and reducing emissions.

---

### **The Five Goals**

Everything your committee recommends should map back to at least one of these goals. Use them as your filter when setting priorities.

**Goal 1: Safety for All Ages & Abilities** Improve safety and awareness of walking and bicycling for everyone, from young children to older adults.

**Goal 2: More Trips on Foot & by Bike** Increase the actual number of walking and bicycling trips made in Portsmouth.

**Goal 3: High-Quality, Year-Round Facilities** Make Portsmouth known as a city where walking and biking are visible, well-supported, and maintained in all seasons.

**Goal 4: Connectivity & Equitable Access** Connect neighborhoods across Portsmouth - especially to schools, employment, and transit - for people of all incomes and abilities.

**Goal 5: Climate & Affordability** Reduce greenhouse gas emissions and household transportation costs by enabling more people to walk and bike for daily trips.

---

## What Portsmouth Has Already Accomplished

Before we talk about what's next, it's worth celebrating what's already been done. The 2025 Plan builds on a decade of real progress since the original 2014 Plan. Your committee isn't starting from scratch - you're inheriting real momentum.

- **~8 miles** of new bike facilities added since 2014 (bike lanes, shared use paths, bike boulevards)
- **7,000+ feet** of new sidewalks built across the city
- **+33%** increase in bicycle volumes at key intersections from 2021 to 2023
- **Bronze / Silver** designations - Bronze-Level Bike Friendly Community (League of American Bicyclists) and Silver-Level Walk Friendly Community

Completed projects include: the NH Seacoast Greenway Rail Trail; bike lanes on Market Street, Maplewood Avenue, Middle Street, Gosling Road, and Borthwick Avenue; a bike boulevard on Lincoln Avenue; improved pedestrian networks in Pannaway Manor, Islington Street, and the McDonough/Hanover neighborhoods; and expanded bike parking citywide.

---

## What Portsmouth Residents Are Telling Us

The 2025 Plan update was built on genuine community engagement: 442 survey responses, 314 interactive map comments, a Farmer's Market pop-up, two public meetings, and focus groups with youth, seniors, and Lafayette Road-area residents. Here is what they said - in their own words:

*"Woodbury Ave is an essential corridor to bike to jobs, shopping, and housing, but multiple lanes of fast traffic make it very unsafe. We should prioritize separated bike facilities here."*

*"If we want to be a walkable city, and a winter city, we need to commit to it year-round."*

*"I walk with a baby stroller now and the sidewalks along Maplewood Ave are in awful condition for anyone that uses wheels for transportation."*

Across all engagement channels, residents consistently called for:

- More protected (separated) bike lanes on busy corridors
- Better signage and wayfinding throughout the network
- Continuous sidewalks without gaps or crumbling surfaces
- Year-round maintenance, especially snow clearance
- Continued and expanded Safe Routes to School programming
- More bike parking and amenities along the Rail Trail

A striking data point from the survey: **58% of respondents said they would bike or would be interested in biking if good-quality infrastructure were in place.** The demand is there, the infrastructure gaps are the barrier.

---

## The Plan at a Glance: Priority Connections

The Plan organizes infrastructure investments around six "Key Connections", the main paths of travel across different parts of Portsmouth. Each connection has specific recommended projects, ranked High, Medium, or Low priority. The community's #1 voted infrastructure priority is a shared use path on Lafayette Road between Elwyn Road and Greenleaf Avenue. You can see maps of these network recommendations in the Bike Ped Plan Update (Table of Contents: Recommendations -> Infrastructure Recommendations, page 97)

**Southeast** → **Downtown** Sagamore Ave area, New Castle connections. Bike boulevards on Walker Bungalow Rd and Broad St; fill sidewalk gaps; improve crossings on South St.

**Southwest** → **Downtown** Islington St and Maplewood Ave corridors. Extends the Seacoast Greenway connections; upgrades sidewalks near the hospital and senior center.

**Northwest** → **Downtown** Woodbury Ave and Peverly Hill Rd. Addresses the high-crash Woodbury Ave corridor and connects northwest neighborhoods. Side path on Peverly Hill Rd currently in design.

**North–South Connections** ★ Community's #1 Priority Lafayette Road shared use path (Elwyn Rd to Greenleaf Ave). Also: Elwyn Rd side path (in design), Gosling Rd improvements.

**East–West Connections** Middle St upgrades (bike lanes), downtown pedestrian realm improvements, improved crossings at key intersections, wayfinding enhancements.

**Connections to Pease** Connecting the Pease Tradeport (major employment center) via Corporate Dr, Heritage Ave, and Aviation Ave. Links commuter cycling to transit stops.

---

## Your Role: What the Committee Actually Does

The 2025 Plan explicitly calls for the establishment of a standing Bicycle and Pedestrian Advisory Committee (listed as a High Priority action). Your committee exists to:

- Advocate for the Plan's implementation within City processes, including capital budget discussions and development reviews
- Advise City staff and Council on bicycle and pedestrian priorities and emerging issues
- Champion programs, events, and community engagement that build a culture of walking and biking
- Review the Plan's progress and provide input on the required biennial status report
- Help identify and pursue funding opportunities

The Plan organizes non-infrastructure work around the "5 E's": Education, Encouragement, Enforcement, Engineering, and Evaluation.

---

## Suggested Year 1–2 Priorities

Not everything can happen at once. Below are actions from the Plan that are rated High Priority, high feasibility, and relatively low cost - the right place to build momentum and quick wins while longer infrastructure projects move through design and funding cycles. The full list can be found in the Bike Ped Plan Update (Table of Contents: Recommendations -> Non-Infrastructure Recommendations, page 76)

<b>Priority</b>	<b>Action</b>	<b>Lead</b>
HIGH	Establish the committee's formal structure, meeting cadence, and relationship with Planning Department staff	Committee + Planning
HIGH	Review the Plan and develop a short list of 2–3 infrastructure projects to champion in the CIP process	Committee
HIGH	Develop (or update) a printed and online biking and walking map for Portsmouth	Planning Dept.
HIGH	Promote Safe Routes to School program and connect with the school department on programming	Schools + Committee
HIGH	Launch adult bicycle safety education partnership with SABR	Committee + SABR
HIGH	Advocate for Plan use in all development review—flag opportunities when projects go before Planning Board	Committee
MED	Organize a community event (Mayor's Ride, open street event, or walk/bike-to-school day)	Rec. Dept. + Committee
MED	Establish a quick-build program: identify 2–3 low-cost spot improvements for early action	Planning + Public Works
MED	Create a funding database to track grant opportunities (RAISE, TAP, HSIP, NHDOT)	Planning Dept.
MED	Coordinate with COAST on transit stop improvements near bike/ped priority corridors	Committee + COAST

---

## Your Reference Library

- **2025 Bicycle & Pedestrian Master Plan Update (full document):**  
[portsmouthnh.gov/planportsmouth/bicycle-pedestrian-plan](https://portsmouthnh.gov/planportsmouth/bicycle-pedestrian-plan)
- **Complete Streets Design:**  
<https://www.portsmouthnh.gov/planportsmouth/complete-streets>
- **Portsmouth Capital Improvement Plan (FY 2025–2030):**  
[portsmouthnh.gov/planportsmouth/CIP](https://portsmouthnh.gov/planportsmouth/CIP)
- **NH Seacoast Greenway:** [nhseacoastgreenway.org](https://nhseacoastgreenway.org)
- **Safe Routes to School:**  
[portsmouthnh.gov/planportsmouth/portsmouth-safe-routes-school](https://portsmouthnh.gov/planportsmouth/portsmouth-safe-routes-school)
- **Seacoast Area Bicycle Riders (SABR):** [seacoastbikes.org](https://seacoastbikes.org)

# Portsmouth Master Plan Update

Sustainability Committee  
February 26, 2026



# Agenda

Portsmouth Master Plan Update, Sustainability Committee  
February 26, 2026

- 1. Purpose & Process Overview (5 min)**
- 2. Draft Plan Framework (10 min)**
- 3. Key Sustainability-Related Recommendations (5 min)**
- 4. Discussion (45 min)**

# What a comprehensive “master plan” is and isn’t

Think of it like a strategic plan for where and how the City should develop and invest over the next 10 years.

Master Plans are powerful tools to align development regulations and investments in infrastructure and quality of life with a unified vision.

**The planning process will help us shape and create:**



**A statement of shared values**



**A strategic vision and roadmap for the future of the city**



**A framework for implementation**

**The final plan will establish:**

**Growth Framework  
(Preserve, Enhance, Adapt)**

**Foundation for changes to land use  
and zoning regulations**

**Capital investment priorities**

**Policy and program priorities**

**Framework for more detailed district  
and topic-specific plans**

**The plan will NOT:**



**Provide a zoning rewrite**



**Generate detailed topic-area or  
place-specific plans**

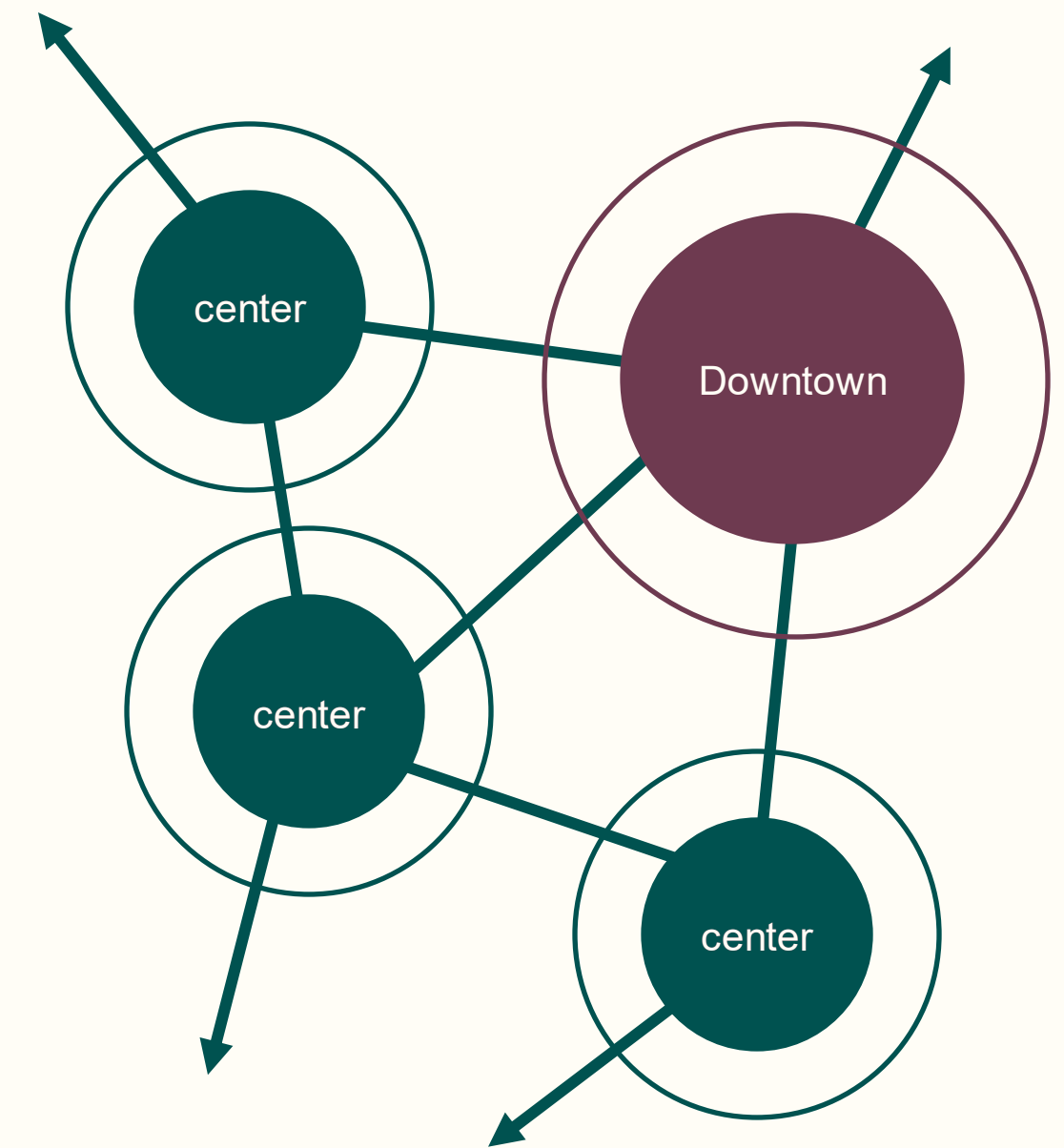


**Decide exactly how local  
resources will be spent**

# Plan Focus

In addition to baseline obligations, the Master Plan will focus on **filling gaps and making connections** between the City's many recent topic- and area-specific planning efforts. The following key issues will be the primary focus of this plan due to the urgency with which they need to be addressed and a need for more analysis and community conversation around these important topics:

- **Housing** What are Portsmouth's housing needs? What types and price points will best support the City's workforce and the evolving age and household size of residents? How can we best enable and encourage these types of housing in the City?
- **Economy** Where is Portsmouth's economy headed over the next decade? What types of industries and jobs support it now, and which are best positioned to support it in the future? How does this impact workforce housing and training needs? What can Portsmouth do to encourage and support the kind of economic opportunities that make the community stronger, more stable, resilient, vibrant, and desirable?
- **Development Patterns & Urban Form** How and where should Portsmouth grow? What is the right scale, location, and form of future development? How should this relate to investments in mobility, infrastructure, recreation, and community services that support a high quality of life for City residents? How should this respond to and reflect climate resilience, environmental conservation, and sustainability priorities?



# What topics does a comprehensive “master plan” focus on?

The Master Plan will focus on **filling gaps and making connections** between the City’s many recent topic- and area-specific planning efforts.

The **Foundational Topics** will be the primary focus of this plan due to the:

- lack of recent plans addressing these topics holistically
- urgency of needs
- need for more analysis and community conversation

The **Cross-Cutting Topics** will be integrated throughout based on existing plans.

## Foundational Topics

A **unified strategy** for land use, zoning and community design, integrating:

Economy

Housing

Transportation & Mobility

Land Use & Built Form

## Cross-Cutting Topics

Topics that are **integral to and woven into** the unified strategy articulated for the foundational topics.

Sustainability & Resilience

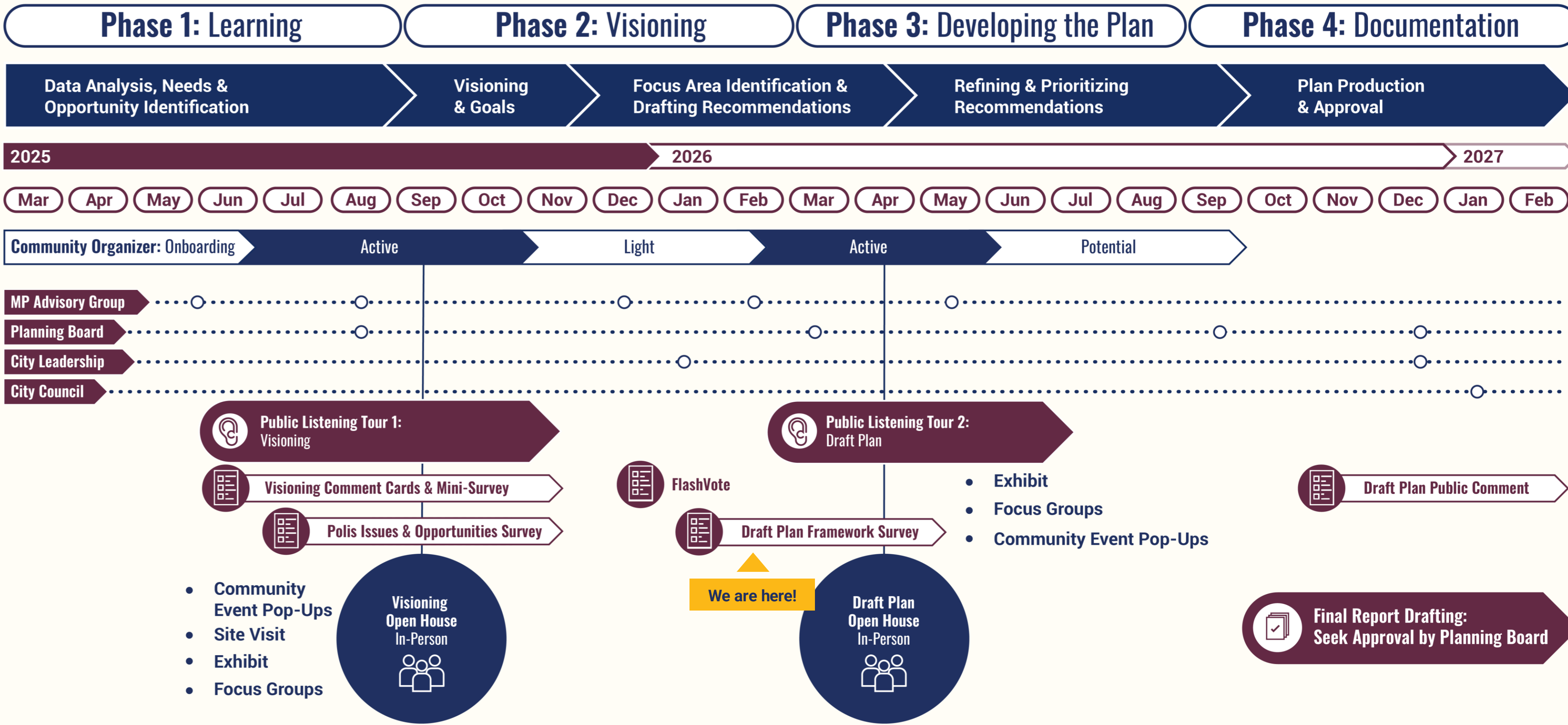
Public Utilities, Services & Facilities

Natural Resources & Conservation

Arts, Recreation & Amenities

Culture & Historic Preservation

# Planning Process



# Outreach & Engagement Update from **Anne Weidman**, our Community Organizer!



**The fall and winter holiday season was deliberately a quieter time for engagement.**

Current focus is on the **Draft Plan Framework Survey** and gearing up to promote the **April 22nd Draft Plan Open House.**

We will be doing targeted outreach through the remainder of February and March to get feedback on draft recommendations.

# Draft Plan Framework

**Vision**

**Values**

**Goals**

**Spatial Development Framework**

Degree of Change

Future Place Type Vision

Adaptation Focus Areas

Thresholds

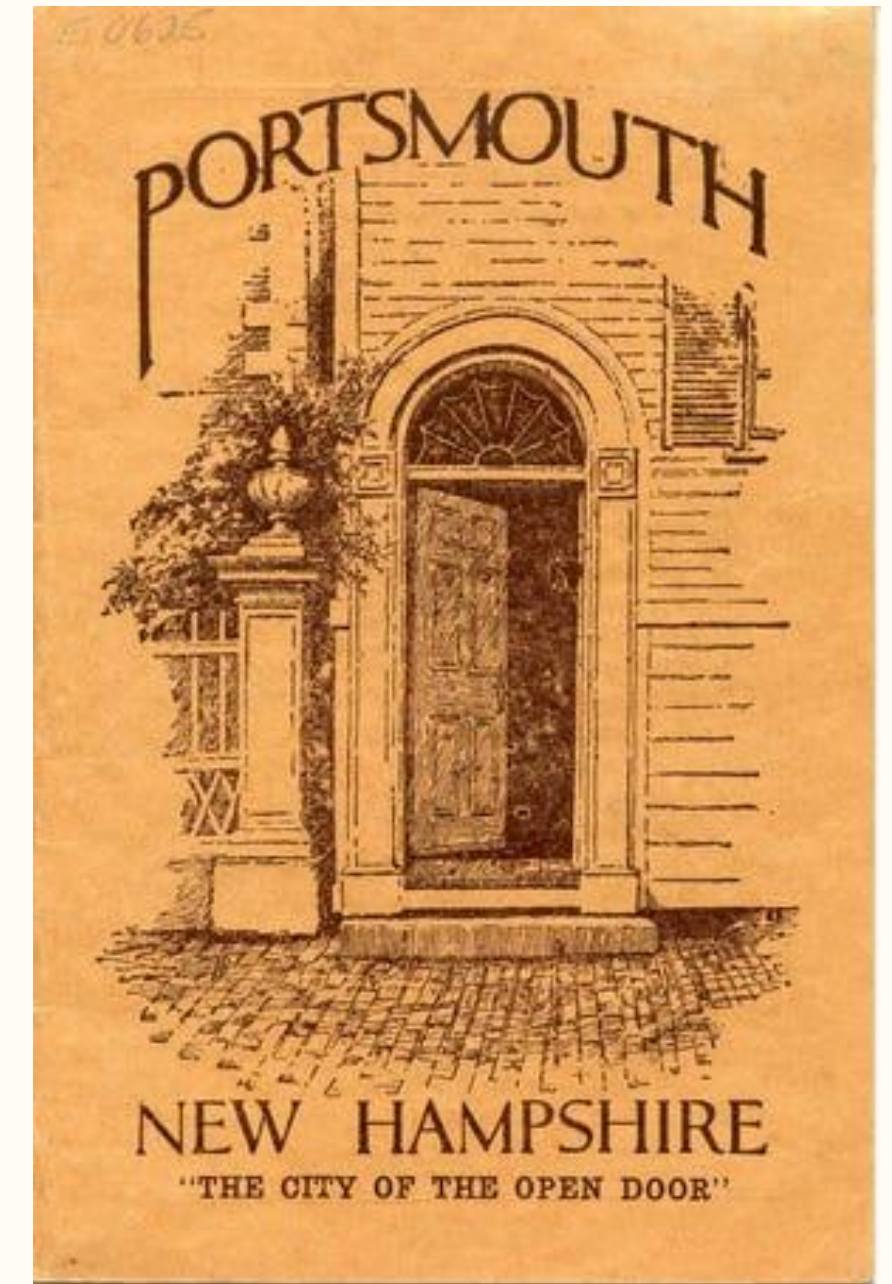
# Draft Vision Statement

Over the next decade, Portsmouth will continue to cultivate our role as the Seacoast region's cultural and economic hub, protect the places that anchor our shared identity and historic character, and invest in sustainability and resilience.

We will honor and uphold our identity as the *City of the Open Door* by supporting the people who create our community, providing a thoughtful range of housing and neighborhood choices, and ensuring our City is accessible and well-connected.

Together we will work to keep Portsmouth a beautiful, vibrant, and welcoming home for generations to come.

*Revisions will be focused on keeping the statement concise and ensuring the connection to attainable housing is clear.*



*According to [Seacoast Online](#), Portsmouth's slogan "The City of the Open Door" first appeared in a series of promotional pamphlets issued in the 1920s by the recently established Chamber of Commerce.*

# Draft Core Values

We value.....

**Vibrancy**

Our rich variety of organizations, businesses, and activities.

**Authenticity**

Our City's historic character and our ability to contribute to the City's ever-evolving identity through self-expression.

Suggested  
Language  
Revision

**Inclusivity**

was "Diversity"

Welcoming and supporting the full range of ages, incomes, abilities, and identities of Portsmouth community members.

**Connectivity**

Transportation and communication systems that work for everyone and bring our City together.

Suggested  
Addition

**Sustainability**

Living and investing in a low-impact way that creates a healthier planet capable of supporting the safety and well-being of generations to come.

**Resiliency**

The capacity of our residents, built, and natural environment to adapt to a changing climate.

# Draft Goals

Wording may evolve to emphasize affordability more

Suggested Addition

1

## Invest in Quality of Place

Improve the everyday lives of residents and visitors and fulfill the community's desire for a sustainable future by investing in and connecting them to Portsmouth's environmental and cultural amenities.

2

## Calibrate and Create Diverse Housing

Provide housing for all ages and incomes that will support current residents and welcome newcomers.

3

## Promote Balanced, Fiscally Responsible Development

Promote "smart growth" development patterns that contribute to fiscal health and manage residential property tax burden through aligned land use policy and municipal capital investment.

4

## Cultivate Our Economy

Support the local artists, small businesses, and anchor employers that drive Portsmouth's regional gravity.

5

## Protect Core Identity

Safeguard the cultural, historic, and environmental assets that make the City unique and beautiful, and ensure that future development contributes to Portsmouth's character.

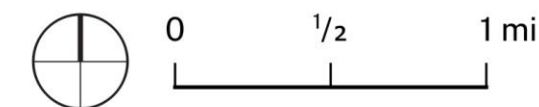
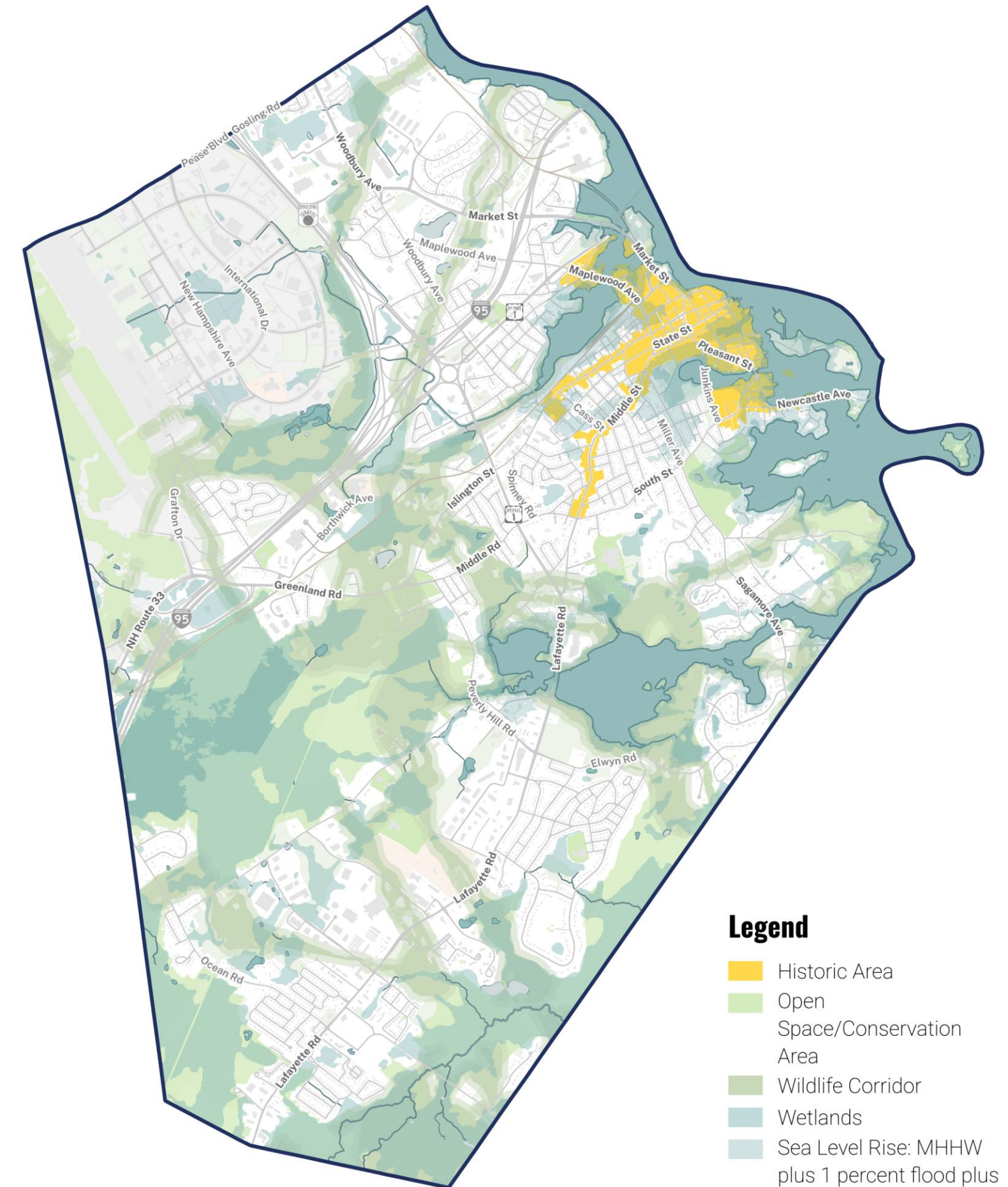
# Spatial Framework

Development Constraints  
Degree of Change  
Future Place Type Vision  
Adaptation Focus Areas  
Thresholds

# Development Constraints

- Identifies constraints on future development in Portsmouth:
  - Environmental
    - Coastal flood risk
    - Wetlands
    - Conservation Areas and Open Space
    - Ecological & Wildlife Migration Corridors
  - Infrastructure (water/sewer)
  - Historic designation
- Provides a framework for identifying where there is existing capacity or future potential to support additional development.

## Development Constraints



# Degree of Change

This map from the Public Visioning Open House shows a vision for how Portsmouth will shape and direct changes in the existing development patterns of the City.

## Preserve – limited, conservation-focused investment/development

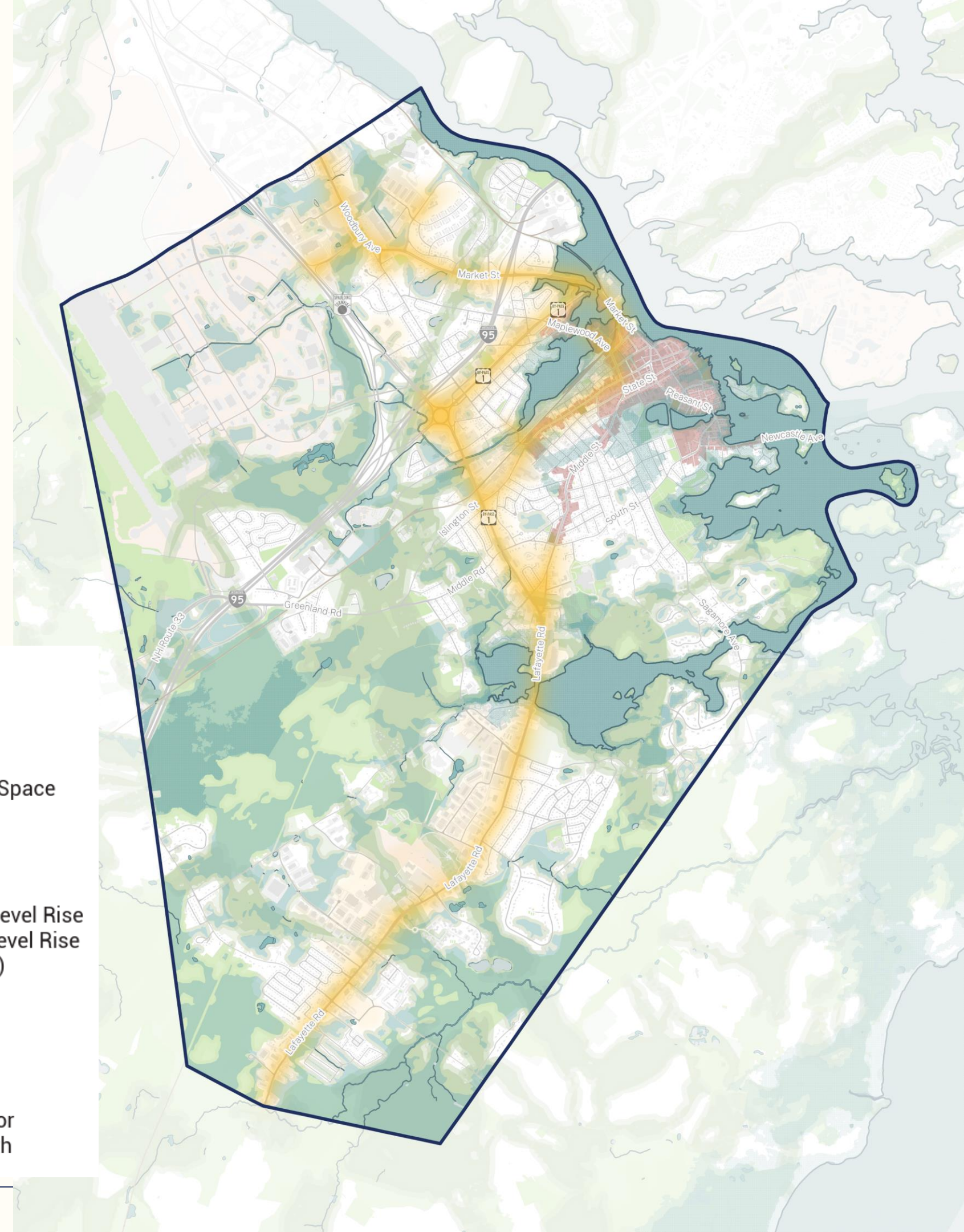
- **Characteristics:** significant collective ecological and historical value to Portsmouth’s identity, quality of life, sustainability, and resilience.
- **Investment:** focus on improvements within environmental, infrastructural, and cultural resource constraints
- **Regulation:** align allowable future development to constraints

## Enhance – targeted improvements for flexibility and quality of life

- **Characteristics:** built out and have strong existing development patterns and norms, capable of supporting Portsmouth’s needs in the coming decade
- **Investment:** enhance mobility, public realm, and amenities and services for quality of life
- **Regulation:** calibrate zoning to support diversity and flexibility where needed

## Adapt – promote a shift in development pattern

- **Characteristics:** single-use or mobility-limited areas where the development pattern is more fragmented or less versatile and flexible in supporting the full range of Portsmouth’s needs. These tend to be more auto-oriented with disconnected street networks
- **Investment:** promote connected street and trail networks, with supportive utilities, services, recreation, and open space amenities
- **Regulation:** promote denser, clustered development at a pedestrian scale with clear mixed-use commercial cores and diverse housing types



### Legend

#### Preserve

- Historic Designation
- Conservation / Open Space
- Wildlife Corridor
- Open Water
- Wetlands
- Flood Risk with Sea Level Rise (1% Flood + 6ft Sea Level Rise at High Tide - MHHW)

#### Enhance

- Established Patterns

#### Adapt

- Areas with capacity for adaptation and growth

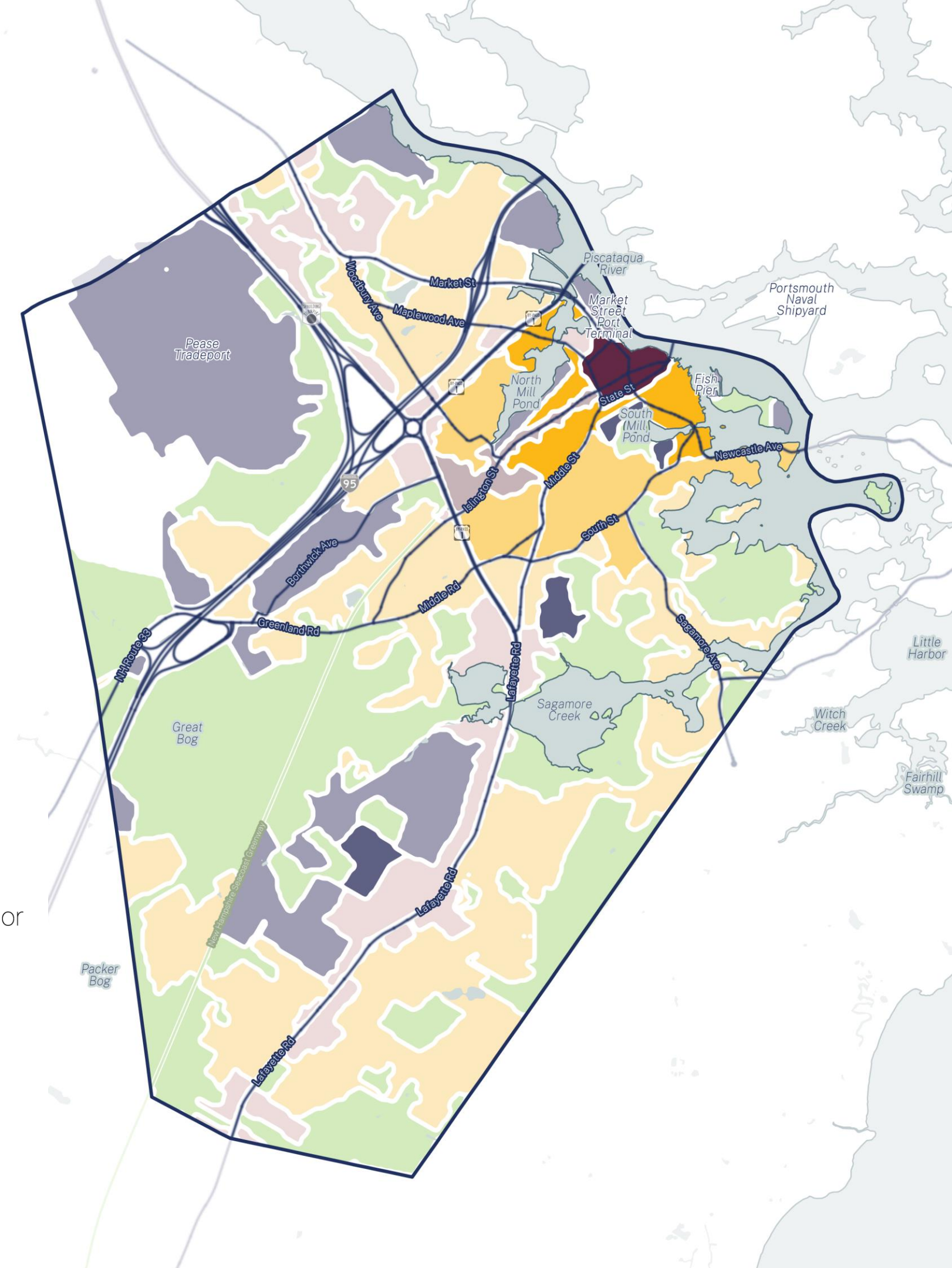
# “Mental Map” of Place Types Today

This mental map blends form, network connectivity, and land use patterns.

- This hybridizes form-based development patterns by also considering use, network connections, and role in neighborhood structure and experience.
- This is the starting point for thinking about how Portsmouth wants to shape these places, including identifying where to:
  - Preserve
  - Enhance
  - Adapt

## Place Types

- Urban Core
- Neighborhood Corridor
- Suburban Corridor
- Urban Neighborhood
- First Ring Suburb
- Second Ring Suburb
- Civic Hub
- Employment Hub
- Corridor

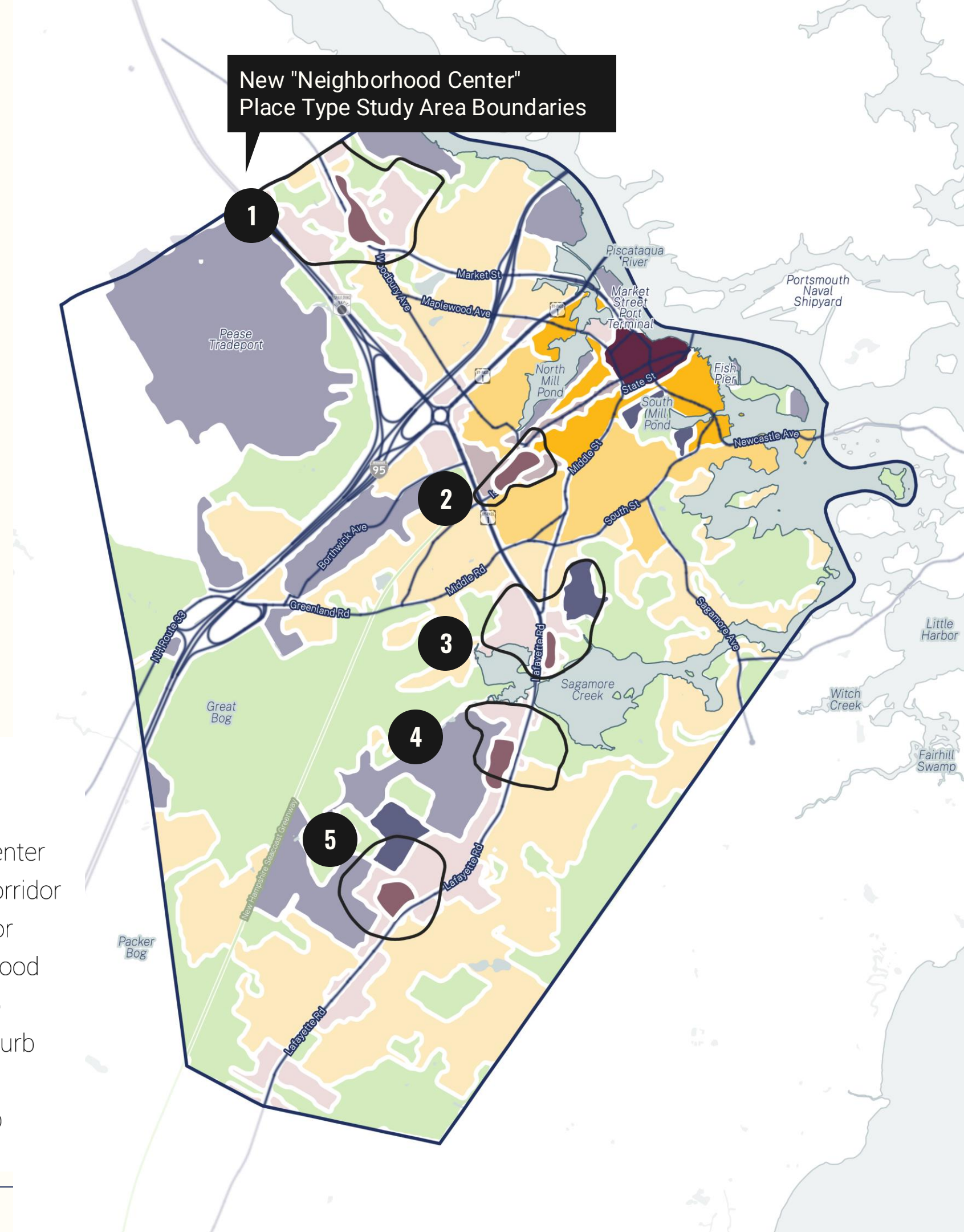


# Future Place Types Vision

A mental map of the future land use and development vision that blends form, network connectivity, and land use patterns.

- In most cases, we suggest reinforcing existing Place Types.
- The primary shift is the identification of emerging and potential "**Neighborhood Center**" Place Types study areas throughout the outer or "Gateway" neighborhoods of Portsmouth.

*A **Neighborhood Center** is a local destination with a dynamic mix of housing, commercial uses, public spaces, institutions, and infrastructure serving the immediate neighborhood surrounding it.*



## Place Types

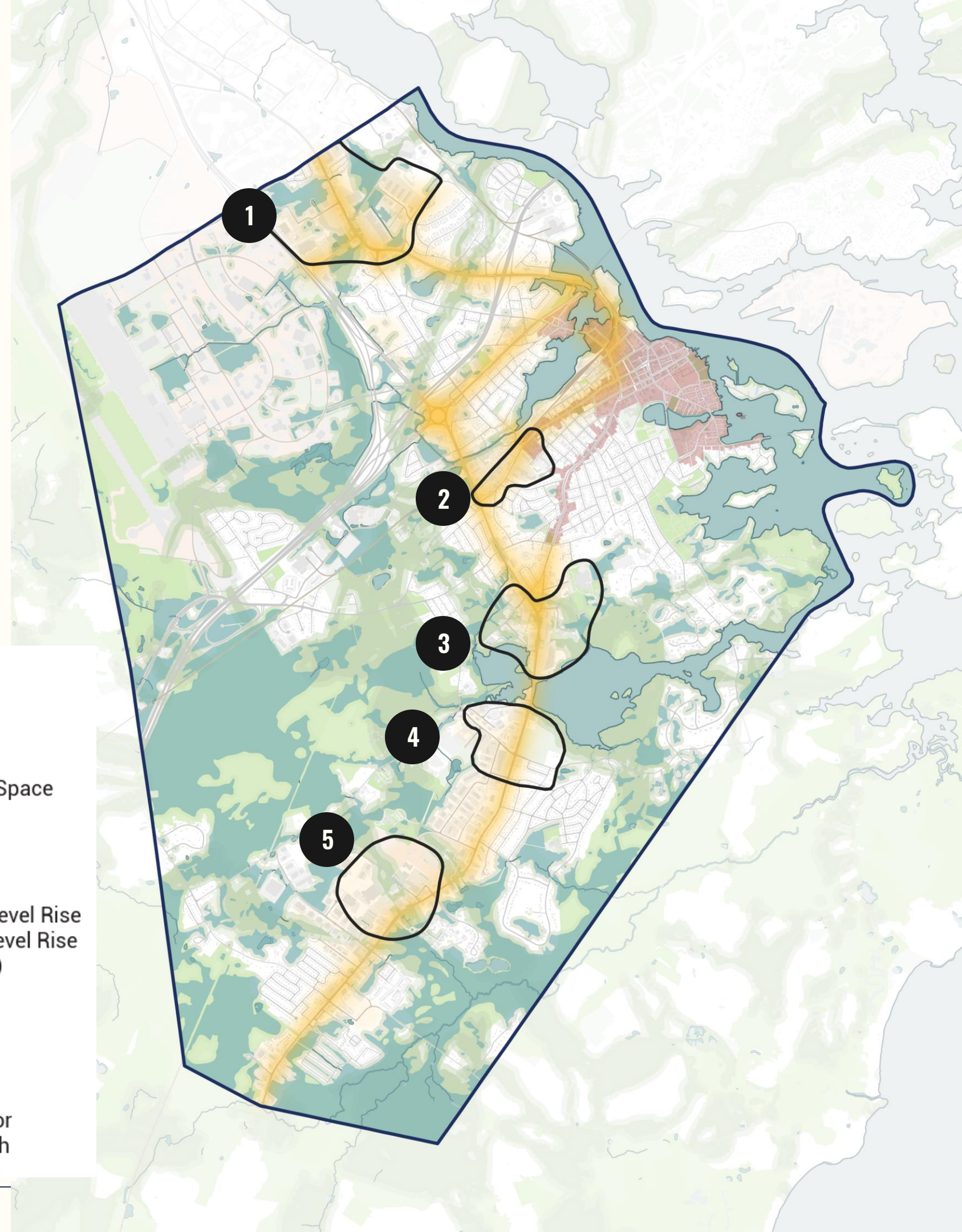
- Urban Core
- Neighborhood Center
- Neighborhood Corridor
- Suburban Corridor
- Urban Neighborhood
- First Ring Suburb
- Second Ring Suburb
- Civic Hub
- Employment Hub
- Corridor

# Adaptation Focus Areas (Gateway Neighborhood Centers)

Note: adaptation in this context is not referring specifically to climate change adaptation, but rather a more general adaptation of urban development patterns.

- **Adaptation Focus Areas** are areas that have unmet potential or unaddressed issues and need more guidance and direction to effectively shape future development and/or investment in infrastructure and quality of life amenities and services. These are generally where adaptation of the current development pattern is both feasible and desirable.

*NOTE: Generally, these are areas that have already been experiencing market-driven redevelopment or transition of uses and have been mapped as Gateway Corridor and Gateway Center districts in recent rezoning. In this context, the Master Plan can be an effective tool to address the pressures and feeling of being in flux by providing clear vision and direction for these areas.*



## Legend

### Preserve

- Historic Designation
- Conservation / Open Space
- Wildlife Corridor
- Open Water
- Wetlands
- Flood Risk with Sea Level Rise (1% Flood + 6ft Sea Level Rise at High Tide - MHHW)

### Enhance

- Established Patterns

### Adapt

- Areas with capacity for adaptation and growth

# Thresholds (formerly “Gateways”)

- **Thresholds** are important areas of transition and access points that would benefit from safety, accessibility, wayfinding, and public space enhancements to address the complexity of use and overall experience. These are often characterized by a change in character from one place type to another or traversing a transportation barrier such as a highway or rail line.

*NOTE: Generally, these transitional areas were chosen because they have an outsized impact on citywide perceptions and behavior.*

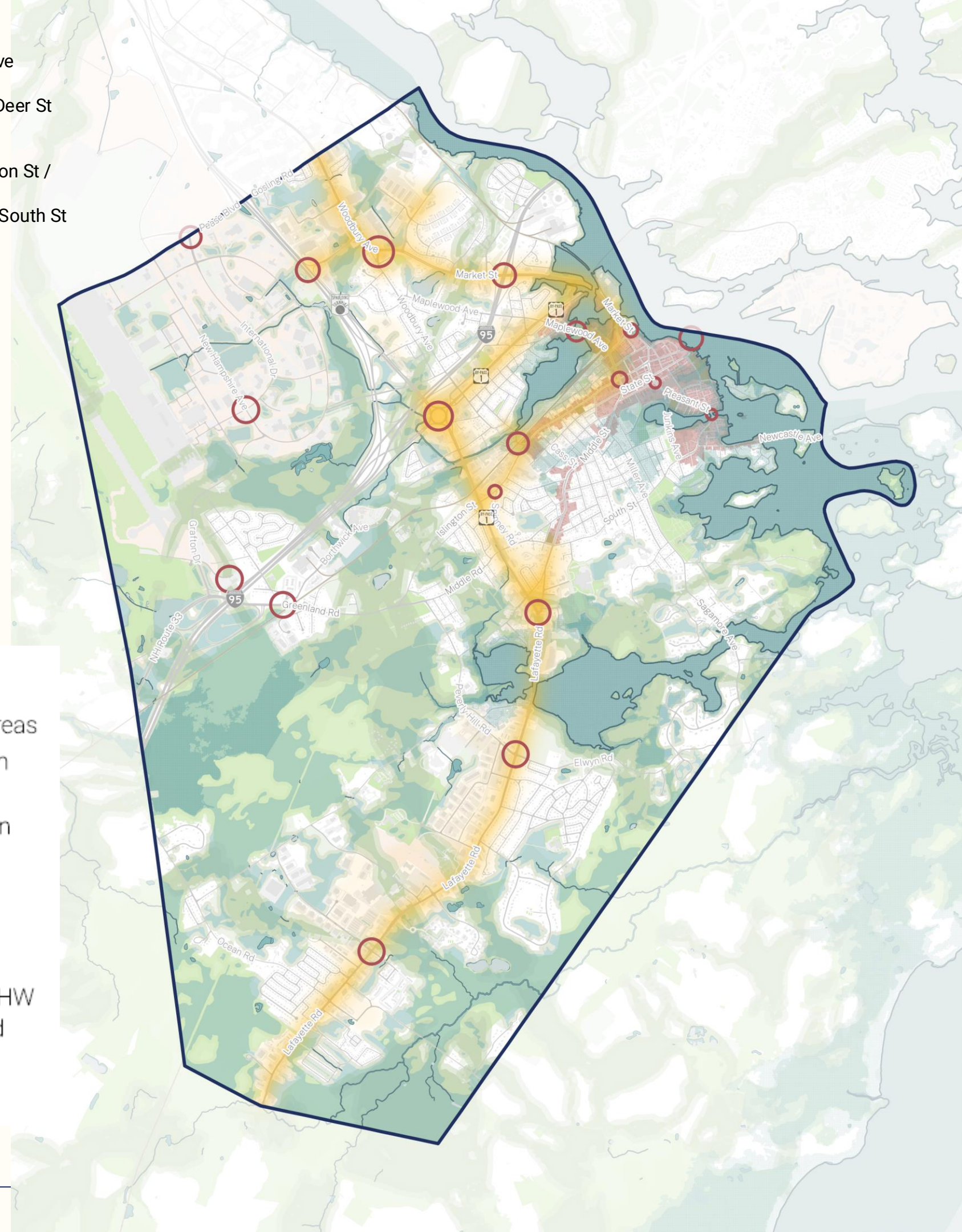
*This will be a prompt at the upcoming Draft Plan Open House to test our analysis so far and invite input on other problem areas that should be highlighted and prioritized via the Master Plan.*

## Gateways

- Market St & Woodbury Ave
- Market St & I-95
- Market St & Russell St / Deer St
- Memorial Bridge
- Maplewood Ave Bridge
- Maplewood Ave & Islington St / Congress St
- Pleasant St & Marcy St / South St
- Rt-1 Traffic Circle
- Bartlett St & Rail Underpass / Islington St
- Islington St Overpass of Rt-1 Bypass
- Miller Ave / Sagamore Ave & South St
- Greenland Rd & Grafton Rd
- Greenland Rd & Sherburne Rd
- Rt-1 Bypass & Lafayette Rd
- Rt-1 / Lafayette Rd & Heritage Ave

## Legend

- Potential Growth Areas
- Historic Designation
- Open Space/Conservation Area
- Wildlife Corridor
- Open Water
- Wetlands
- Sea Level Rise: MHHW plus 1 percent flood plus 6ft
- Gateways



# Key Recommendations

Resilience Zoning

Strengthening Mobility Alternatives

Enabling "Smart Growth" Through Zoning Changes

Promoting Adaptation to Reinforce Outer Neighborhood Centers

# Resilience Zoning

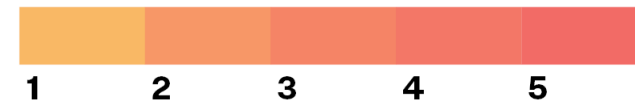
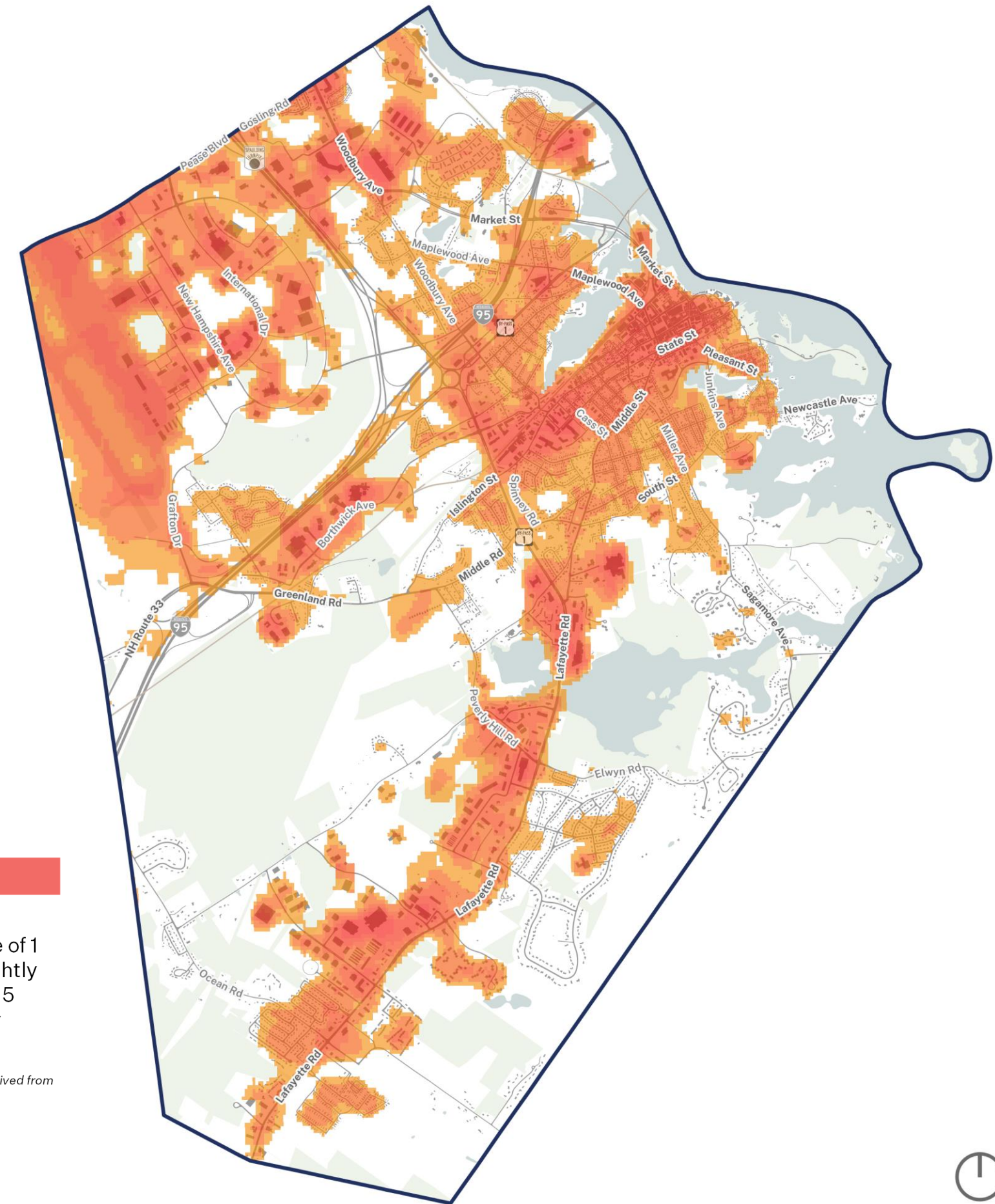
## High Heat

Zoning is an important tool to complement and extend the City's investment in green infrastructure by ensuring private development helps to absorb and reduce heat on high-heat days.

- Under the "Quality of Place" goal we will be recommending regulatory strategies to ensure future private development is helping to mitigate the negative impact of high heat events, especially in the public realm.

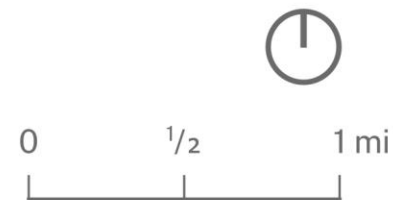
Common strategies include:

- Tree canopy and planting standards (including open space, pervious, and planted area requirements)
- Shading standards
- Roof material standards (Solar Reflective Index)
- Paving and hardscape material standards (Solar Reflective Index)



Heat severity is measured on a scale of 1 to 5, with 1 being mild heat area (slightly above the mean in Portsmouth) and 5 being severe heat area (significantly above the mean in Portsmouth).

Source: The Trust for Public Land Heat Severity dataset, derived from 2023 Landsat 8 imagery

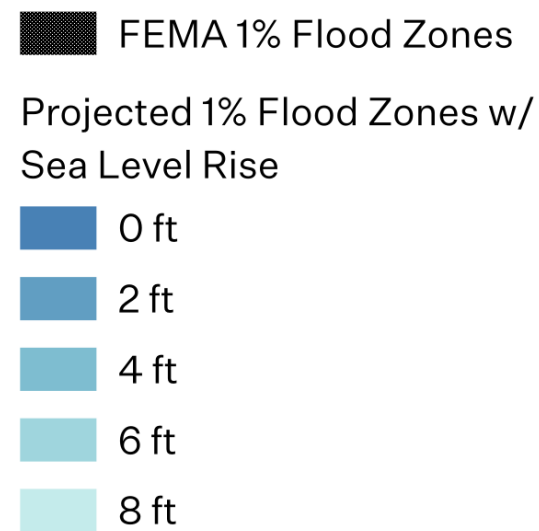
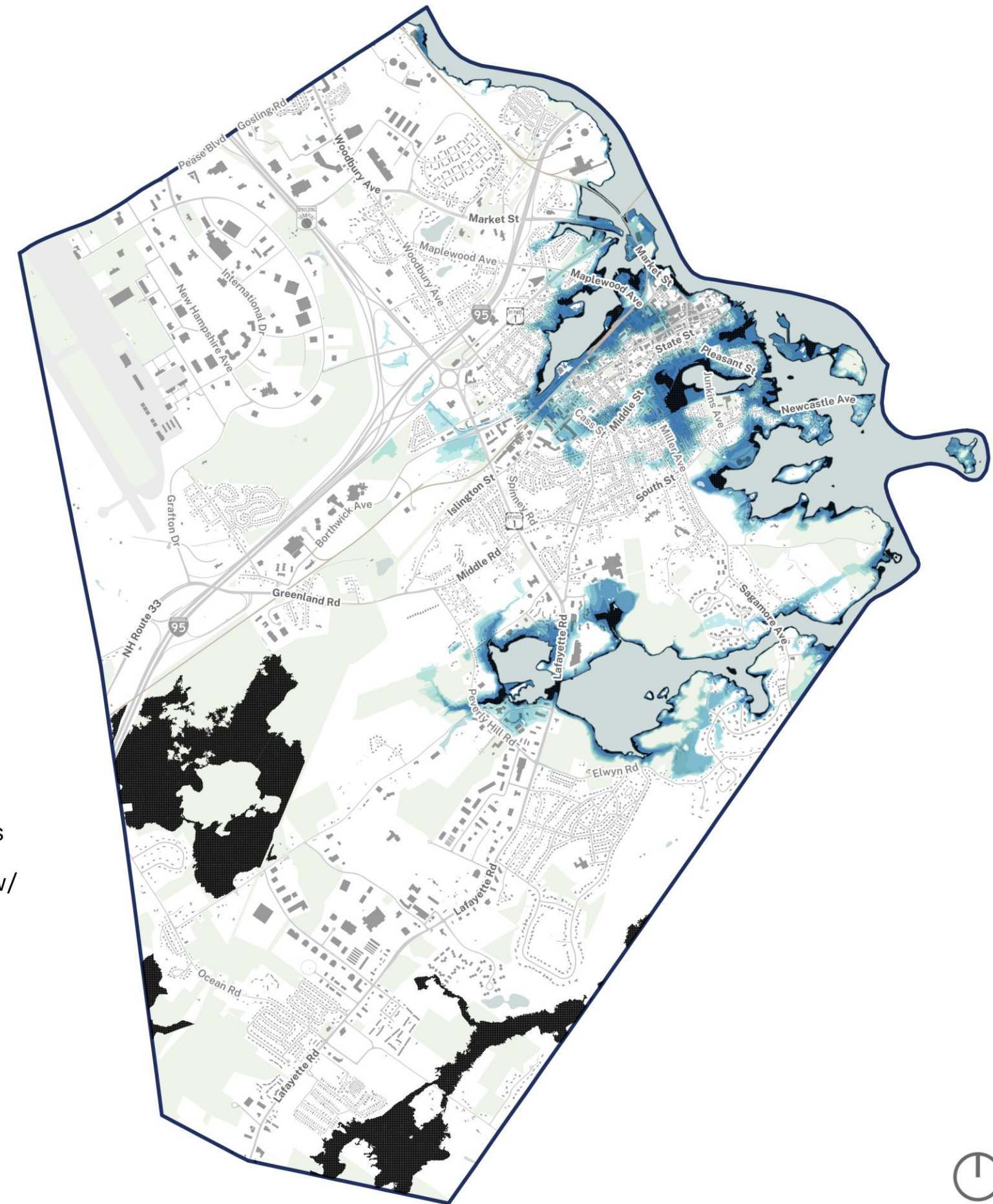


# Resilience Zoning

## Coastal Flood Risk

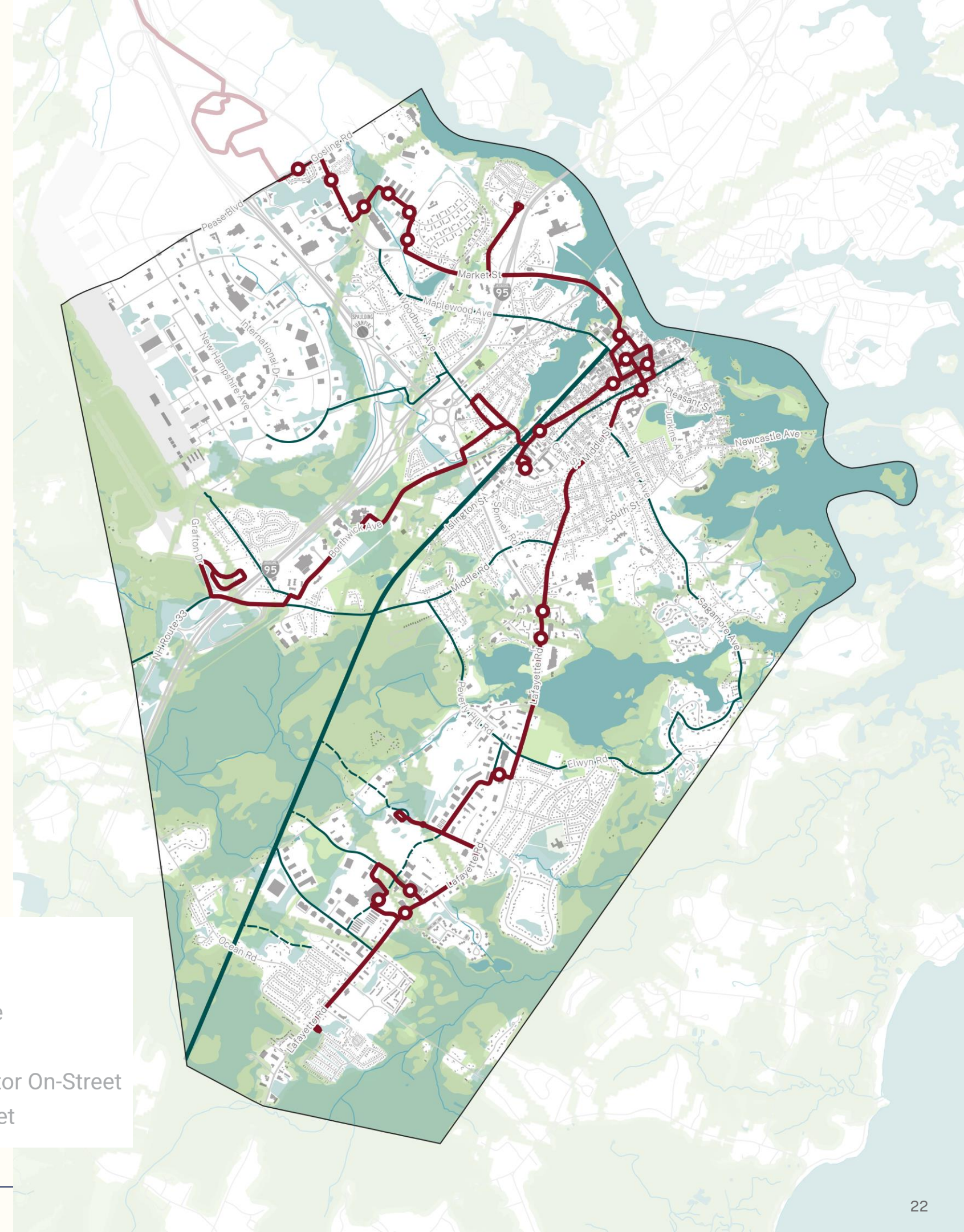
Zoning is an important tool to complement and extend the City's investment in green infrastructure by ensuring private development helps to reduce risk of property damage, loss of life, and operational disruptions due to coastal flood risk.

- The Master Plan will highlight efforts to date, like the Coastal Resilience Initiative and subsequent creation of the **Extended Flood Hazard Zone**, which requires 2' freeboard to promote resilient building within its boundaries.
- The Master Plan will also be highlighting important actions to align on what specific coastal flood risk scenario(s) Portsmouth is preparing for, and revisit and adjust the **Extended Flood Hazard Zone** as well as stormwater management regulations based on forthcoming State hydrodynamic modeling being completed by the Woods Hole Group.



# Strengthening Mobility Alternatives

- **Transit Priority Routes & Stops** connecting downtown to outer neighborhood centers with higher frequency service.
- **Motorized Micro-Mobility Framework** planning and policy to encourage use and promote good behavior.
- **Bike Priority Network** connecting key employment and recreational destinations to neighborhood centers (based on Bike/Ped Plan)
- **Intersection Safety** prioritizing pedestrian experience and accessibility for all ages and abilities, especially where the Transit Priority Loop and Bike Priority Loop interact with the rest of the road network.



**Mobility**

- Transit Priority Stop
- Transit Priority Route
- Greenway Trail
- Bike Priority Connector On-Street
- - - Bike Priority Off-Street

# Degree of Change >> Zoning

Across the board, there is a need to streamline the Portsmouth zoning districts to clearly communicate priorities to developers and landowners.

**Preserve** – limited, conservation-focused investment/development

*align allowable future development to constraints*

**>> Simplifying Downtown Zoning**

**Enhance** – targeted improvements for flexibility and quality of life

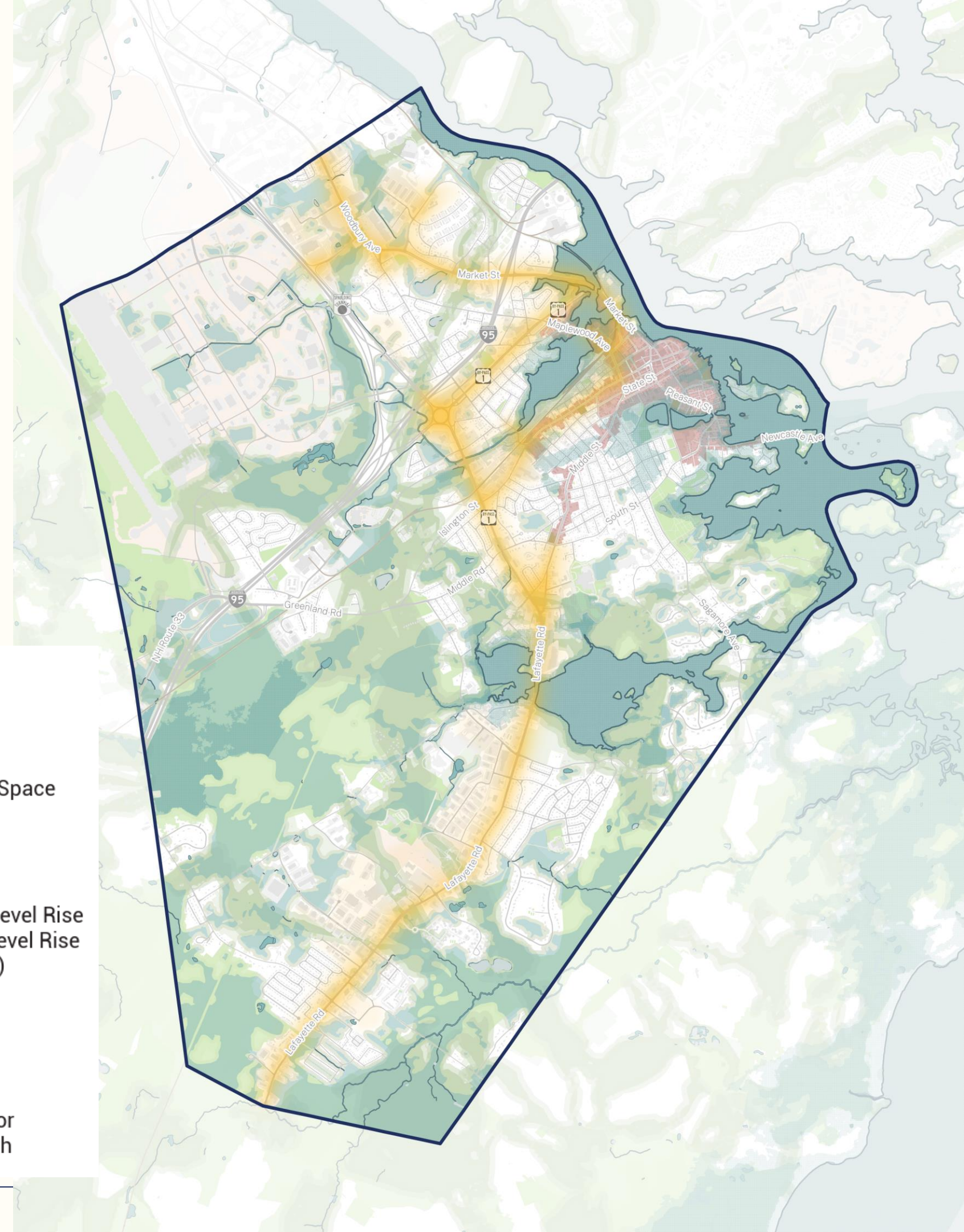
*calibrate zoning to support diversity and flexibility where needed*

**>> Existing Residential Zoning District Analysis**

**Adapt** – promote a shift in development pattern

*promote denser, clustered development at a pedestrian scale with clear mixed-use commercial cores and diverse housing types*

**>> Gateway District Analysis & Focus Area Urban Design Visions**



**Legend**

**Preserve**

- Historic Designation
- Conservation / Open Space
- Wildlife Corridor
- Open Water
- Wetlands
- Flood Risk with Sea Level Rise (1% Flood + 6ft Sea Level Rise at High Tide - MHHW)

**Enhance**

- Established Patterns

**Adapt**

- Areas with capacity for adaptation and growth

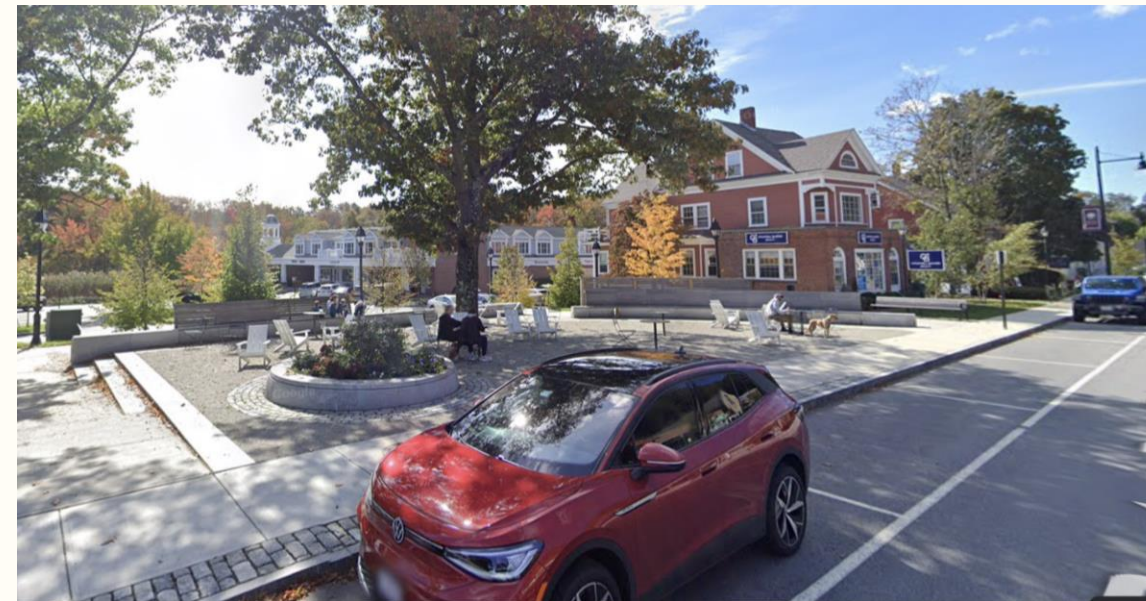
# Cultivating Integrated Neighborhood Centers

**Adaptation requires more comprehensive tools that blend public and private investment.**

This plan can help create a shared framework for adapting the outer neighborhoods to better serve what Portsmouth needs today and tomorrow. This is fundamentally about tying land use and development to the capital investments that support quality of life and environmental health.



*Western Ave Bikeway, Cambridge, MA*



*Weston Town Center Plaza, Weston, MA*



*Latest phase of Tuscan Village in Salem, NH.*

## Infrastructure + Mobility

- Water supply + service network
- Wastewater treatment + service network
- Stormwater management
- Connected, walkable street network
- Transit priority infrastructure
- Bike and micro-mobility infrastructure
- Sidewalks + crosswalks
- Safe multi-modal intersection design

## Civic, Recreation + Amenities

- Critical Commercial Services (grocery and pharmacy)
- Schools
- Libraries
- Recreation Centers
- Parks
- Open Spaces + Natural Areas

## Density + Vibrancy

- Mixed-use core with varied businesses
- Dense multifamily surrounding core
- Thoughtful, place-specific economic development and cultural sector strategy
- Public realm and streetscape standards

# Adaptation Focus Area Urban Design & Development Principles

- **Clustered**

- Mixed-use commercial, amenity, and service core in the area with strongest market and infrastructure
- Dense, diverse multi-family housing surrounding the core to promote viability and vibrancy

- **Connected**

- Promote connected, walkable street networks
- Link residential and commercial development to nearby open space, recreation, and trail assets with high-quality, protected connections, especially the Greenway, Community Campus, and water bodies
- High-visibility, conveniently and safely located public transit and shuttle stops
- Prioritize a safe and enjoyable experience for those walking, cycling, and using micro-mobility devices (curb cuts, parking in rear, protected/off-street bike lanes, well-located bike parking)

- **Accessible & Inclusive**

- Incentivize affordable residential and commercial space
- Promote Universal Design principles for accessibility

- **Healthy, Sustainable & Resilient**

- Invest in tree canopy and green infrastructure that enhances air, water, and soil quality for human and ecosystem health
- Increase conservation of and access to natural spaces, promote flood resilience through wetland ecological restoration
- Promote energy efficient and resilient new development

# Next Steps

## 1. Draft Written Recommendations

Drafted, to be shared via email for comments from this committee once City staff, Master Plan Advisory Group, and Planning Board have all had the opportunity to review.

## 2. Public Outreach Outlook

- [Draft Plan Framework Survey](#) (digital, can develop printed version if helpful)
- [Focus Groups & Targeted Outreach](#): Business Community, Social Service Providers, Arts/Culture Sector, Service Workers, School-Age Children & Families, leaders in Black and Indigenous Portsmouth communities
- [Public Draft Plan Open House](#): April 22, 6PM @ Community Campus

## 3. Planning Board & Committee Meeting Outlook

- [Sustainability Committee](#): February 26
- [Planning Board](#): March 26
- [Economic Development Committee](#): April 3

